



The
allrounder

CUT-GRINDER

THE DIAMOND PATHOLOGY SAW FOR THE SECTIONAL AREA

SAFE – FAST – GENTLE

MAXIMUM CUTTING HEIGHT: 310MM

TekEquipment

CUT-GRINDER

THE DIAMOND PATHOLOGY SAW FOR THE SECTIONAL AREA

EQUIPMENT:

Motor protection with restart interlock

Motor brake

Impellers completely made of stainless steel

Upper impeller can be completely removed

Band saw blade is tensioned by a gas pressure spring - no adjustment errors possible.

Foil keyboard

TECHNICAL DATA:

230 V 50Hz

2 kW

Blade speed infinitely variable

Wheel diameter 315 mm

Weight 110 kg

Installation area: (WxD) 500x440mm

External dimensions (WxDxH) 777x810x1600mm

Floor clearance 400 mm.

Cutting height 310 mm

BANDSAW BLADES:

0.3mm D 151 - recommended for normal cutting, our "bestseller"

0,3mm D126

0,4mm D181 - segmented - recommended for long cutting surfaces

0,2mm D 64 - recommended for finer cuts e.g. teeth and cut-off thin grinding technique

0,1mm D64 - recommended for cut-off thin grinding technique



We attach great importance to the safety of our customers. For this reason, we have our diamond pathology saws regularly inspected by the Employer's Liability Insurance Association for safety and hygiene!



This stationary cutting-grinding system with a fixed large work table is specially designed for preparing tissue, bone and composite materials for histological evaluation and is therefore restricted exclusively for this use.

A diamond-coated, high-precision band saw blade is used for cutting.

The device works according to the principle of the cut-thin-grinding technique.

The tub table is equipped with a plastic plate. The tub has a separate drain. Normal tap water is supplied to the unit for cooling and rinsing. The connection is made to any tap and is possible without pressure reducer.



The on/off switch is designed as a membrane pushbutton with signal.

Red= Off responds at normal pressure

Green=. On at normal pressure.

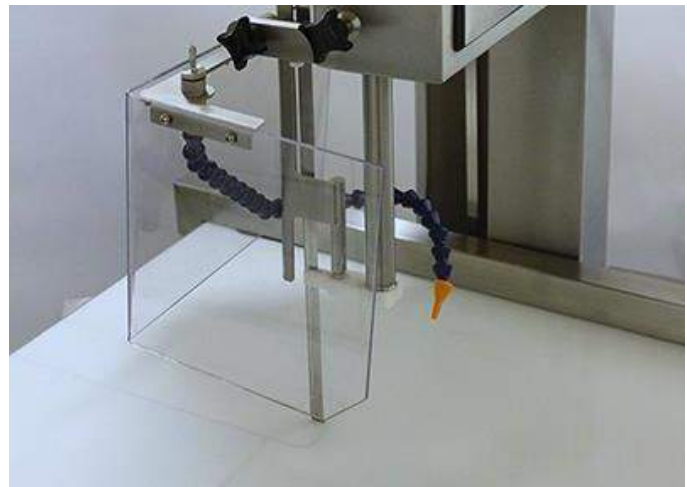
The speed control provides additional running smoothness, safety when starting the unit and a more stable cutting technique.



The bandsaw blade is driven directly by an air-cooled motor via the drive pulley.

When the appliance door is opened, the drive is switched off by a magnetic switch. The follow-up time is 3 seconds.

The operator is protected by a splash guard without being obstructed in his view.



All external machine parts, including the band saw blade, are made of rust-proof stainless steel.

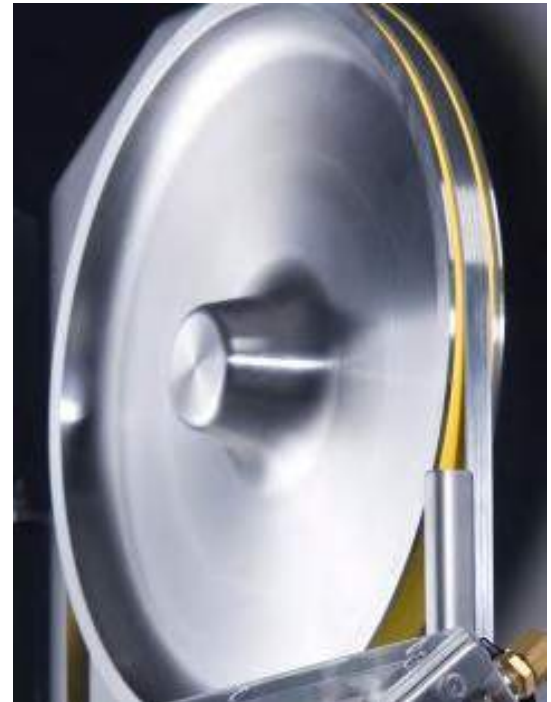
The band tensioning device enables quick replacement of the separating straps as well as relaxation during longer breaks in work.



The adjustment device on the impeller allows changes in the separation belt circulation to be quickly corrected.



The impellers are equipped with special flat belts to increase running smoothness and protect the separator belt and impellers. Flat belts are consumables and must be replaced when worn.



Short decalcification times due to fine grinding technique!

Water and chips that are transported with the band saw blade are collected in the lower collecting tray. Of course, you can also clean this in the dishwasher. Cleaning the device is easy, as the device has smooth surfaces and all areas are easily accessible. Your appliance should remain a nice, hygienic appliance even after many hours of use.

The cut-grinder has no internal hoses that need cleaning. All surfaces are freely accessible.

Accident prevention devices

Door interlock: switch-on protection when the appliance door is open

Foil switch: restart interlock - appliance cannot be restarted with the green button after the emergency stop function has been triggered. The stop button must have been pressed beforehand.

minimized risk of injury

no serrated saw band

***THE DEVICE IS ONLY APPROVED IN
CONJUNCTION WITH A DIAMOND BAND.***



Which device is right for you?

	cut-grinder	cut-grinder primus 2
Design	Stand-alone unit	Desktop device
Cutting height	310mm	220mm
Specialist for	Femur, larger implants	femoral head, jaw segment, smaller implants
Band saw blade thicknesses	0,1-0,4mm	0,1-0,3mm
Motor	2 KW	600 W
DGUV mark	yes	yes
adjustable speed	yes	yes
Band saw blade tension regulated via gas pressure spring	yes	yes
Water supply	direct	direct or via water tank possible
Upgrade with parallel guide possible	yes	yes
Weight	110kg	60kg

TekEquipment™
 AU 1300 368 138
 NZ 0800 456 217
tekequipment.com.au



Walter Messner GmbH
 Barsbütteler Weg 6
 D-22113 Oststeinbek
 Tel.: 040/714873-0
 Fax: 040/714873-18
mail@walter-messner.de
walter-messner.de